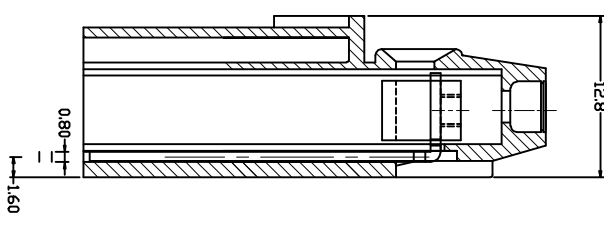
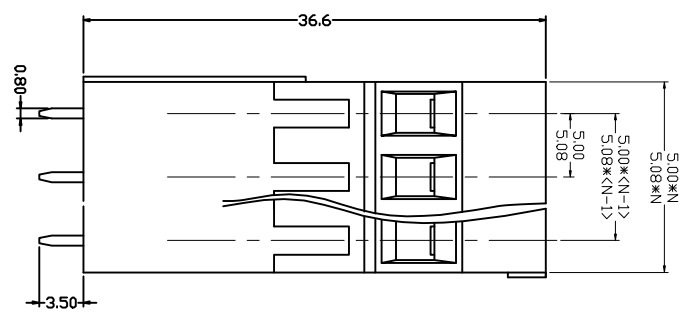
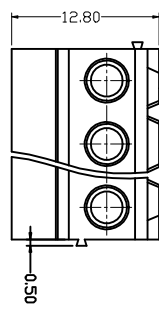


| REV | DESCRIPTION | DRAWN | CHECKED | APPROVED |
|-----|-------------|-------|---------|----------|
|     |             |       |         |          |
|     |             |       |         |          |
|     |             |       |         |          |



**·MATERIAL**  
**SCREWS : M2.5 STEEL ZINC PLATED**  
**CONTACT : BRASS**  
**PIN HEADER : BRASS, TIN PLATED**  
**HOUSING : PA66, UL94V-0**

**·ELECTRICAL**  
**RATED VOLTAGE: 300V**  
**RATED CURRENT: 10A**  
**CONTACT RESISTANCE: 20mΩ**  
**INSULATION RESISTANCE: 5000MΩ/1000V**  
**WITHSTANDING VOLTAGE: AC2000V/1Min**  
**WIRE RANGE : 24-12AWG 2.5mm²**

**·MECHANICAL**  
**TEMP RANGE : -40℃ ~ +105℃**  
**MAX SOLDREING : +250℃, FOR 5 SEC.**  
**ORQUE : 0.4Nm(3.6Lb·IN)**  
**STRUO LBERGTG : 6-7mm**

|                   |                 |            |        |                      |
|-------------------|-----------------|------------|--------|----------------------|
| GENERAL TOLERANCE | ANGLE TOLERANCE | PROJECTION | TITLE  | EURO TERMINAL BLOCKS |
| X. ±0.20          | X. ±2°          | UNITS      | ⊕      | PITCH5.00/5.08MM     |
| .X ±0.15          | .X ±1°          | SHEET SIZE | A4     | SERIES               |
| .XX ±0.10         | .XX ±0.5°       | SCALE      | 1:1    | KF128GG SERIES       |
| DRAWING TYPE      | COMPONENTS      | SHEET      | 1 OF 1 |                      |
| DRAWING NO.       |                 |            |        |                      |

**DFP** 慈溪市凯峰电子有限公司  
 KAIFENG ELECTRONIC CO.,LTD